

Photos Above from Left: Feb Art Challenge entries: Rosita Simmons "Exotic Location" & Susan Bateman "Trees"

President's report

2021 is gone and so too a chunk of the new year which seems shrouded in RA tests. But thankfully the veil seems to be lifting now.

After a bit of a stutter, we were finally able to get underway for the year – in terms of seeing and meeting one another face to face. This happened on Monday 28th February.

No sooner do we do that and it is evident that we are actually rushing towards our Annual Exhibition at the Prince Henry Centre, Little Bay. At the time of writing its only about 6 weeks away and there is much to do.

We were lucky in 2021, it was looking like we would struggle to have the Exhibition, but in the end we were able to proceed and it was encouraging. We are very keen to have the Exhibition this year given 'normal' life now has so many uncertainties.

Much has already been done to advance it. For example, look for our advertisement in "The Beast" and look for our Banners around Randwick in the coming weeks.

I encourage members to take the opportunity to be involved for both their own well-being and for the collegiate value of being a member of something of this scale and nature. There are lots of ways to be involved, there are lots of opportunities to display your art, craft and photography.

Be well, stay well,
make art.

Rick Bardsley-Smith
President



Our monthly challenges

Members will be aware that RAS' Monthly Online Art Challenges have been running since August 2021. The Committee has been encouraged by responses to these and it is evident that members have enjoyed their involvement. Sure, the idea emerged because of Covid lock downs, but ongoing fun 'challenges' of this type seem to now have a role in our RAS life together.

We had a break in January, but the subject for February was "Trees". Wonderful work and congratulations to Masaji Hashimoto for a work titled "Trees" and Yuko Takeshita for a work titled "Whisper". They each received a \$25 Eckersley's Art Voucher.

Thank you also to Heidi Hereth for judging the February Comp. and all the RAS members who contributed. Thank you to Nivedita Sen for uploading the entries to the website.

RAS Calendar Mar-April - May

- 2022 Membership Fees were due 1 March 2022;
- International Women's Day Art Prize 2022 – Randwick exhibition 5th, 6th and 7th March 2022;
- Dee Jackson Watercolour Portrait Workshop Sat 6th March 2022 at Coast Centre;
- Prof. Chris Fell Portrait workshop, Sat 19th March 2022, 10am to 1pm at Coast Centre;
- Close of Entries for RAS Annual Exhibition, 5pm 8th April 2022
- RAS Annual Exhibition at Prince Henry Centre Fri 29th April to Sun 1st May 2022;
- RAS AGM late May 2022.



Photo Above: Feb Art Challenge (Most Realistic) prize winner, Masaji Hashimoto, "Trees".



Follow RAS on FACEBOOK & INSTAGRAM!



@randwickartsocietyinc





Photo Above: Feb Art Challenge entry: Francis O'Rourke "High in the air".

Sydney Children's Hospital Exhibition

As previously reported this exhibition was postponed because of Covid. However, we eventually got there. Works were on exhibition in the Hospital over Dec, Jan and into February.

Unfortunately, we were not able to visit the Exhibition because of covid restrictions at the Hospital. However, we were advised that the Exhibition was vibrant and interesting with staff and family members of patients being able to enjoy the offering. We had 20 paintings in place and one was sold.

Bendigo Bank Exhibitions

Much like the Childrens Hospital, our planned exhibition in mid to late 2021 at the Bendigo Bank had to be postponed. As reported in the last Newsletter we did eventually install the exhibition in mid Dec. Further, based on our decisions earlier in the year, monies raised from commissions and/or entry fees were forwarded to charities of the Bank's choice at the close of the year. In that regard we made payments of \$150 each to 'CaringKids' and 'Project Kindness'.

We have not long taken down this Exhibition. We have continued discussions with them and our next planned timeslot is Oct/Nov.

Photo Right: Feb Art Challenge entry by Margaret Vazey.



Photo Above: Feb Art Challenge prize winner (Most Creative) Yuko Takeshita, "Whisper"

Our new web site

All members have benefitted from a stunning effort by Niki Koepl who was well supported by our Secretary Heather Egan as they have created some quantum enhancements of our new web site.

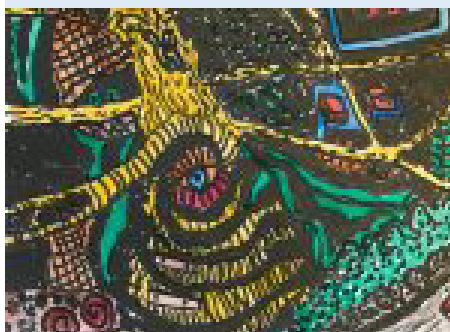
Important work has related to:

- how the site presents and how you move around;
- the transfer of all relevant information from our old web site;
- the ability to make a wide variety of payments (membership, workshops, etc) via various payment platforms.

This is another example of something that doesn't come easy. It's a hard slog.....and its not Niki's main area of expertise and work, but I hunch she is now a bit of a guru on this stuff.

The web site can be found at www.randwickartsocietyinc.com. Members are encouraged to Bookmark this new web site and use it. It offers all that the old site had and much more.

It wont be long and we will decommission our old web site: www.randwickartsocietyinc.org.au. We will keep you posted on that.



Committee work

Your RAS Ctee has continued working hard on routine matters and aspects of our RAS life together. Some of the matters are discussed under Newsletter headings below, but by way of overview they have included:

- Running the various events that have already been planned;
- Expanding and enhancing our new web site to provide for a range of functions including payments for various aspects of RAS life;
- Planning and exploring Monday Studio time. Currently we have 2 venues to organize and co-ordinate;
- Planning and implementing the monthly sketch challenges;
- Exploring possibilities with Sponsorship and marketing, especially as it relates to the annual Exhibition. We have Committee members out and about pressing the flesh to see if we can achieve further sponsorship support;
- Reviewing aspects of the Annual Exhibition and implementing improvements;

We continue to ask for your patience and support as we do this. Some things come together in a fairly straightforward manner, but lots of things take hard work, plenty of thinking and perseverance. And we are no different to other members. We have our own lives to lead but we volunteer for the common good.



Photo Above: Feb Art Challenge entry by Judy Russell, "Trees".

RAS Annual Arts, Crafts and Photography Exhibition 2022

We are now charging towards our Annual Exhibition at the Prince Henry Centre (PHC). Again Randwick City Council has supported us with a grant and they are significant sponsors. We are very appreciative of the support given to us by Council.

Just a reminder, the total time will cover 5 days, which is one more than usual. We have elected to secure an extra day to assist us with set up and installation which has been increasingly hard to do in one day. So the Exhibition will be open to the public for the usual 3 days ending on the Sunday.

Our dates are:

- Wed 27th April – Delivery of Artworks to Little Bay
- Thurs 28th April – Judging
- Fri 29th April. First day and Opening Night
- Sat 30th April
- Sun 1st May Closing Day

Entry Forms will be out soon. Entries close 5pm on Fri 8th April 2022. Make a decision to be involved. There is over \$2000 in total prize money and all works are for sale.

We want to continue to grow and improve the event as a vibrant activity to the benefit of association members as well as our wider community.

Workshops

By the time members read this Newsletter, we will have just had our Dee Jackson watercolour portrait one day workshop at the Coast Centre, Little Bay.

With a few postponements and false starts, we battled Covid restrictions but in the end we were able to secure Sat 5th March.

Thank you to Dee for coming and running the workshop. Nine people attended and by all reports they enjoyed their time together, learnt much and considered the time well spent.

But it doesn't end there. It seems Portraits have come to the fore for RAS just now.

Members also have another opportunity to be involved with portrait work. Through a Committee member, we have connected with Prof. Chris Fell of UNSW. He is an interesting man and has had a significant role to play in the world of chemical engineering. He became the Deputy Vice Chancellor (research and international) at UNSW. Since retirement he has been active in research related to Nanotechnology.



Prof. Fell has agreed to sit for a Portrait session set down for Sat 19th March 2022, 10am to 1pm at the Coast Centre. This is an opportunity to start work on a portrait which could even be submitted to the Archibald (in 2023), if you were so inclined.

If you are interested, more information can be found on the RAS web site. There is a small cost to cover the use of the Centre on that day. Bookings can be made via the RAS web site (www.randwickartsocietyinc.com).



Photo Centre Left: Feb Art Challenge entry, by Maria Kapodistrias

Photo Top: Feb Art Challenge, Paul Convy "Burning Forest"

Photo Immediately below: Feb Art Challenge entry, by Paula Service.

Next Down: Feb Art Challenge entry, by Dina Fox.

Bottom : Feb Art Challenge entry, by Heather Egan



Combined Art Societies of Sydney (CASS)

CASS has traditionally run The Art of Sydney exhibition around the Australia Day period in January each year. In recent years this has occurred at the Maritime Museum at Darling Harbour.

For 2022, the Museum indicated that the use of the facility in January was in doubt. Consequently, consideration was being given to running the event at Easter. In due course it was evident that running the event at Easter would be difficult and this timeframe was dropped.



For 2023, CASS is looking to return to the Maritime Museum around the usual Australia Day timeframe. Stay tuned for those dates.

As reported in the last Newsletter, CASS have locked in 2022 dates for other key activities, namely:
Art in the Mountains, 7th July to 25th July 2022;
Art at the Tops, 25th to 28th Nov 2022.

Art in the Mountains is now open for expressions of interest. The offering is as follows:

Gallery One 88 Fine Art, Katoomba is reserved for 15 days in July 2022. Interested members can hang their work for 3 weeks (open 5 days per week) for a cost of \$200.00 - 20 artists maximum. Commission will be 25%. The space allowed for each artist will be 150cm x 100cm. (Measure and mark this on the floor and fill with finished works to see what fits in the space. You may want to display just one large work or maybe fill the space with many small works. It's up to you).

If you are interested in this opportunity you should email CASS Ctee member KylieM@fabquip.com stating you would like to participate in the Art in the Mountains exercise.



Photo Top left: Feb Art Challenge entry by Maria Coelho, "Bottle Tree".

Photo Bottom left: Feb Art Challenge entry by Judie Bode "Snow Gums".

Photo Top Middle: "Blue, White & Red" by Heidi Hereth – see 'Member News'.

Photo Bottom: Feb Art Challenge entry by Sandi Beynon.

Member News (by Marie Widolf)

For those of us living in the Eastern Suburbs of Sydney on the doorstep of the deep blue coastline that is the Pacific Ocean, we would undoubtedly agree we are truly spoilt with a lifestyle that is envied by many.

With its abundant sea-life, unique fauna, spectacular cliff faces and sun-drenched sands: such is the experience of RAS member and local artist Heidi Hereth, who has this summer opened her new solo exhibition which celebrates all that is coastal living. Titled: **Life By The Sea**, Heidi's paintings range in style from realistic to impressionistic and include studies of beachgoers, animals, detailed observations of sea-shells, cliff formations eroded by crashing waves, and imagined fantasies.

Heidi has had an interest in art since a very young age, and describes her style as varied. She studied fine arts for a year before specialising in graphic design at Randwick Technical College. She records her observations of life by the sea in a sketch book, which she then uses for reference in her paintings. Using water-based mediums, Heidi then captures on her canvases what is the idyll of the Aussie summer-landscape, as in her acrylic painting titled: **Blue, White & Red**. Golden sands, shimmering waves, blue and white striped beach umbrellas, swimmers, picnickers, a sun-bather reading a book, a flock of sea-gulls, and a thong casually abandoned in the foreground: all speak of an iconic Aussie summer-place that we all know and want to return to. Heidi's exhibition was recently held at Waverley Library Galleries in Bondi Junction.

Members can also view her work at: www.heidihereth.com and in the recent March 2022 edition of The Beast (p28).

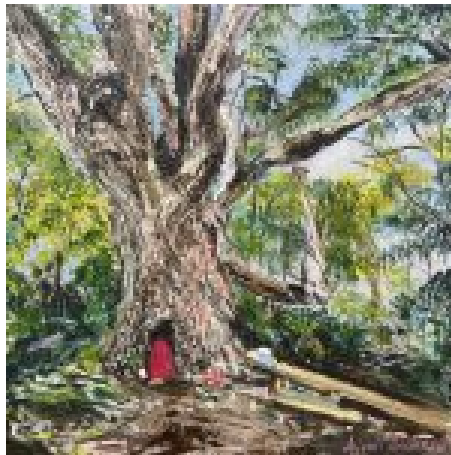


Photo Top: Feb Art Challenge entry by Pat Reid, "Weeping Willow"
Next Photo down: Feb Art Challenge entry by Aileen Anderson.
Photo bottom : Feb Art Challenge entry by Jan Cook "Kamay NP Henry Head walk"

Newsletter composed by **RAS RAG** team

Photo Top: Feb Art Challenge entry by Heidi Hereth, "Fig Tree Trunk"
Next Photo down: Feb Art Challenge entry by Ana McGhie, "By the waters edge".
Photo Centre left: Feb Art Challenge entry by Francis O'Rourke "February Rain"
Photo bottom left: Feb Art Challenge entry by Lydia Chan.